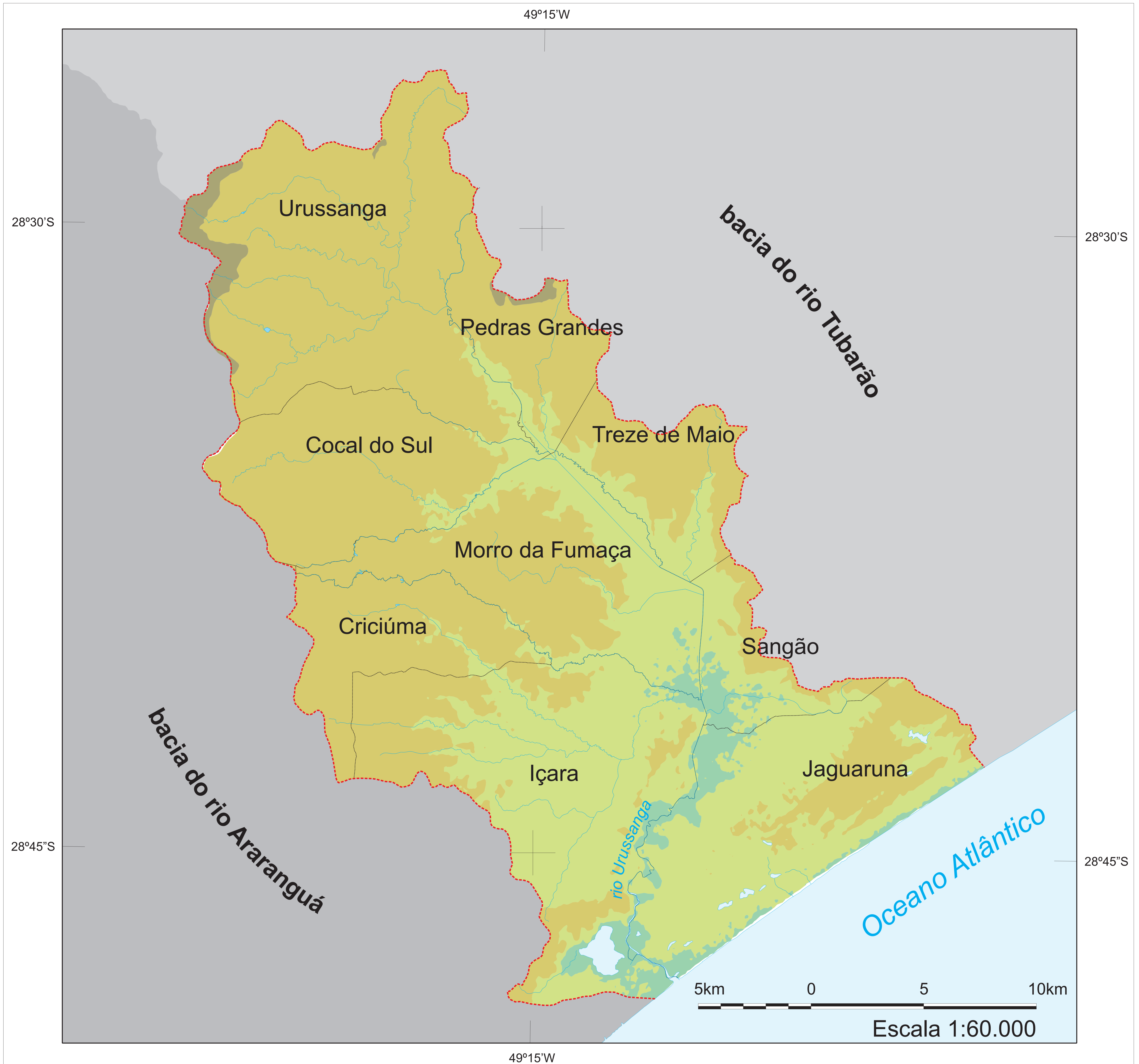


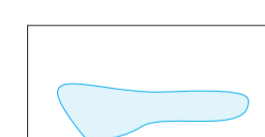
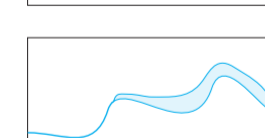
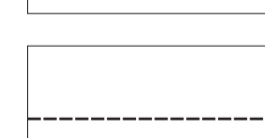


Bacia do rio Urussanga





Vegetação



LEGENDA:

-  limite da bacia
-  bacia limítrofe
-  lagoa
-  rio principal
-  limite municipal no interior da bacia

Floresta ombrófila densa

-  montana (acima de 1000m)
-  sub-montana (30 a 400m)
-  terras baixas (5 a 30m)
-  aluvial (0 a 5m)

FONTES: a) Secretaria de Estado do Desenvolvimento Econômico Sustentável - Mapa Político do Estado de Santa Catarina, escala 1:500.000, 2010; b) IBGE/EPAGRI - Cartas topográficas digitais, escala 1:50.000, 1978.

ORGANIZAÇÃO E DESENHO: Geóg. Mauricio Pamplona.

Realização

Apoio

Patrocínio

